

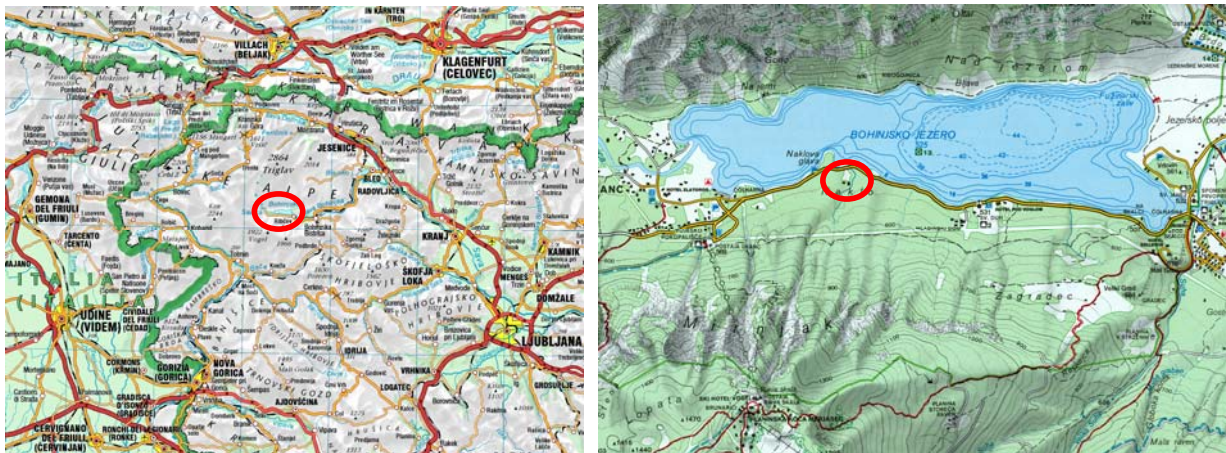
# 5<sup>th</sup> ICA Mountain Cartography Workshop Slovenia, Bohinj, 2006

30<sup>th</sup> March – 1<sup>st</sup> April, 2006

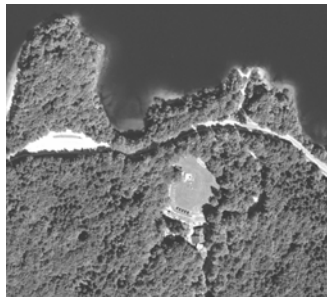
version: June 2006

All mountain cartographers are warmly welcome to the 5<sup>th</sup> ICA Mountain Cartography Workshop in Slovenia, on spring 2006. Biannually workshop covers all topics related to mountain mapping, including avalanche and glacier mapping, relief representation, tourist mapping, data capture, photogrammetry, remote sensing, geo-visualization, multimedia, etc.

Slovenia is a country of 20.000 sq. km and 2 millions inhabitants, situated in central Europe between Adriatic Sea, the Alps and the Panonian lowland; politically between Italy, Austria, Hungary and Croatia. Since 2004 Slovenia is a member of EU. The Capital city is Ljubljana. Map of Slovenia is accessed at <http://www.gu.gov.si/gu/gisborza/brezplac/PK/PK1.asp>



Mountain Cartography Workshop will take place in The National Training Centre of **SCOUT ASSOCIATION OF SLOVENIA**, called “GOZDNA SOLA” (forest’s school). The centre is located in the Triglav National Park, near Lake Bohinj, 533 m above sea level, in the peaceful calm of the surrounding forest and mountains up to Triglav (2864 m), the highest peak of Slovenia and Slovenian national symbol. The entire house would be reserved for Workshop. Besides cartographic and similar presentations there will be also many possibilities for hiking and other outdoor activities.



## **Preliminary agenda**

Wednesday March 29 <sup>th</sup>	During the day 19:00	Arrival and check in Welcome meeting
Thursday March 30 <sup>th</sup> and Friday March 31 <sup>st</sup>	09:00-13:00 13:00-15:00 15:00-18:00	Workshop sessions Lunch break Workshop sessions
Saturday April 1 <sup>st</sup>	During the day 20:00	Skiing and other outdoor activities Dinner
Sunday April 2 <sup>nd</sup>	Before 12:00	Check out

## **Presentations**

The presentations should be related with research or production activities in the following topics:

- Topographic mountain cartography: relief representation, hillshading, cliff drawing
- Cartography of glacial phenomena
- Risk and natural hazard mapping, including snow avalanches
- Geomorphological mapping
- Alpine cartography, cave mapping, mountain tourist mapping
- Remote sensing applications
- Data models, data integration, workflows and examples of mountain cartography
- Digital Elevation Models: data capture, classification, representation
- Cartography and GIS tools applied to mountain data
- Visualization, rendering, animation
- Applications: multimedia, Internet, LBS services

The presentations and practical demonstrations will be planned for 20 minutes in length, including questions and answers.

Summary of the works are encouraged. To familiarize participants and motivate general discussion, papers or projects should be posted on the Web before the workshop. Links will be added to this page. Proceedings of papers will be prepared after workshop.

Participants are invited to bring both their analogue and digital map products for display and discussion.

Workshop attendance will be targeted for about 40 people to provide interaction within a small group. All participants are expected to make presentations.

Language: The abstracts, papers and presentations should be in English language.

Equipment: PC, screen, beamer, slide and overhead projectors will be provided.



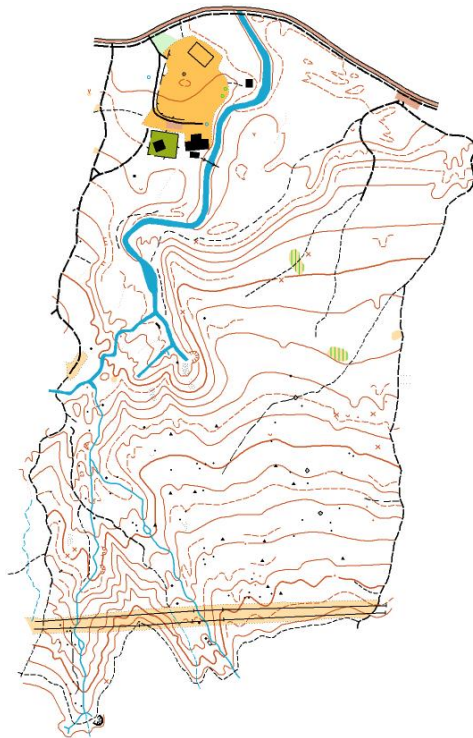
### Possible outdoor activities

Depends on weather and climate. In the end of March in Bohinj area we can expect snow covered field or warm spring days. Therefore we will follow weather situation.

From workshop's place there is only 2 km to cable car to ski centre Vogel (1500 – 1900 m), where a lot of terrains both for alpine or background skiing are available. Therefore all participants who want to ski are warmly encouraged to bring their ski equipment. The skiing equipment can be rented in the ski centre, too.

Area around Gozdna sola is covered by large scale school orienteering map and one other is very close, canoes and mountain bikes are available in Gozdna sola, hiking trail around Bohinj Lake (about 12 km) can be very scenic.

Other points of interest in Bohinj area: 5 km to natural climbing park, 8 km to swimming pools center, cultural heritage (hay-racks in Studor, Churches of St. John and of the Holy Spirit, soldier's cemetery from the WW1), natural points of interests (Savica waterfall, Mostnica gorge)... more on <http://www.bohinj.si>



## Accommodations

Gozdna sola is a house with a multi-purpose room, a club room and accommodation for 50 people, 8 beds in 6 smaller rooms (4 x 2 + 1 short) and 39 in mattress dorm rooms (2 x 8, 1 x 12 and 1 x 11 beds). There is a place for camping also, but not suitable in spring time. Bathrooms with showers are in every flat. The comfort is not like in hotels, more like in mountain huts. <http://gs.rutka.net/>

Price: **25 € per day** includes accommodation, full board (4 meals) and tourist tax, coffee breaks, a small contribution for general organizing expenders can be expected. Vegetarian meals are available, but please indicate with apply.



## Access

1. To Slovenia by plane: International airport Ljubljana <http://www.lju-airport.si/eng/default.asp>, 20 km north from Ljubljana (town Brnik, near Kranj), from airport by bus to Kranj (or to Ljubljana, if you have enough time for visiting Ljubljana)
2. By bus: regular bus line from Ljubljana (90 km, 2 hours) or Kranj (63 km, 1.5 hours), [http://www.ap-ljubljana.si/vozni\\_red\\_eng.php](http://www.ap-ljubljana.si/vozni_red_eng.php), end stop "Bohinj Zlatorog" (last bus stop), 3 km from Gozdna sola (you will be picked up at the station)
3. By train: Ljubljana – Jesenice – Bohinjska Bistrica, Villach (Austria) - Jesenice – Bohinjska Bistrica or Nova Gorica (near Gorizia, Italy) - Bohinjska Bistrica; <http://www.slo-zeleznice.si/en/>, 8 km from Gozdna sola (you will be picked up at the station)
4. By car: highway Ljubljana – Jesenice - Villach (Austria), exit Bled – Lesce, 30 km to Bohinj (see the map of Slovenia)

If anyone has some further questions, problems or ideas concerning access to Bohinj do not hesitate to contact us.

## Important dates

Abstract Submission: November 1<sup>st</sup>, 2005  
Paper Submission: February 1<sup>st</sup>, 2006

## Workshop organizers

Dr. Dusan Petrovic  
Faculty of Civil and Geodetic Engineering  
University of Ljubljana  
Jamova 2, Ljubljana  
[dusan.petrovic@fgg.uni-lj.si](mailto:dusan.petrovic@fgg.uni-lj.si)

Lojze Miklavcic  
Geodetic Institute of Slovenia  
Jamova 2, Ljubljana  
[lojze.miklavcic@geod-is.si](mailto:lojze.miklavcic@geod-is.si)

## ICA Commission on Mountain Cartography

Chair  
Dr. Lorenz Hurni  
Institut für Kartographie  
ETH Hönggerberg  
CH-8093 Zürich  
Switzerland  
[hurni@karto.baug.ethz.ch](mailto:hurni@karto.baug.ethz.ch)

Co-chair  
Dr. Karel Kriz  
Institut für Geographie  
Universität Wien  
Universitätsstrasse 7  
A-1010 Wien  
Austria  
[kriz@atlas.gis.univie.ac.at](mailto:kriz@atlas.gis.univie.ac.at)