

# **Combination of traditional hill-shading and digital cartography on the small scale maps**

**Gizella BASSA**

**GiziMap**

**Budapest, Hungary**

**[gizimap.mant@mtesz.hu](mailto:gizimap.mant@mtesz.hu)**

6th ICA Cartography Workshop  
Mountain Mapping and Visualisation  
11-15 February 2008, at KUSPO, Lenk, Switzerland



**GIZI MAP**  
MAP DESIGN & PUBLISHING

II-1279 Budapest 25. P.O.Box 29  
Fax: phone: (+36 1) 326-0717  
Tel.: (+36 1) 326-0715,  
(+36 1) 201-8219  
E-mail: gizimap.munka@netsc.h  
www.gizimap.hu

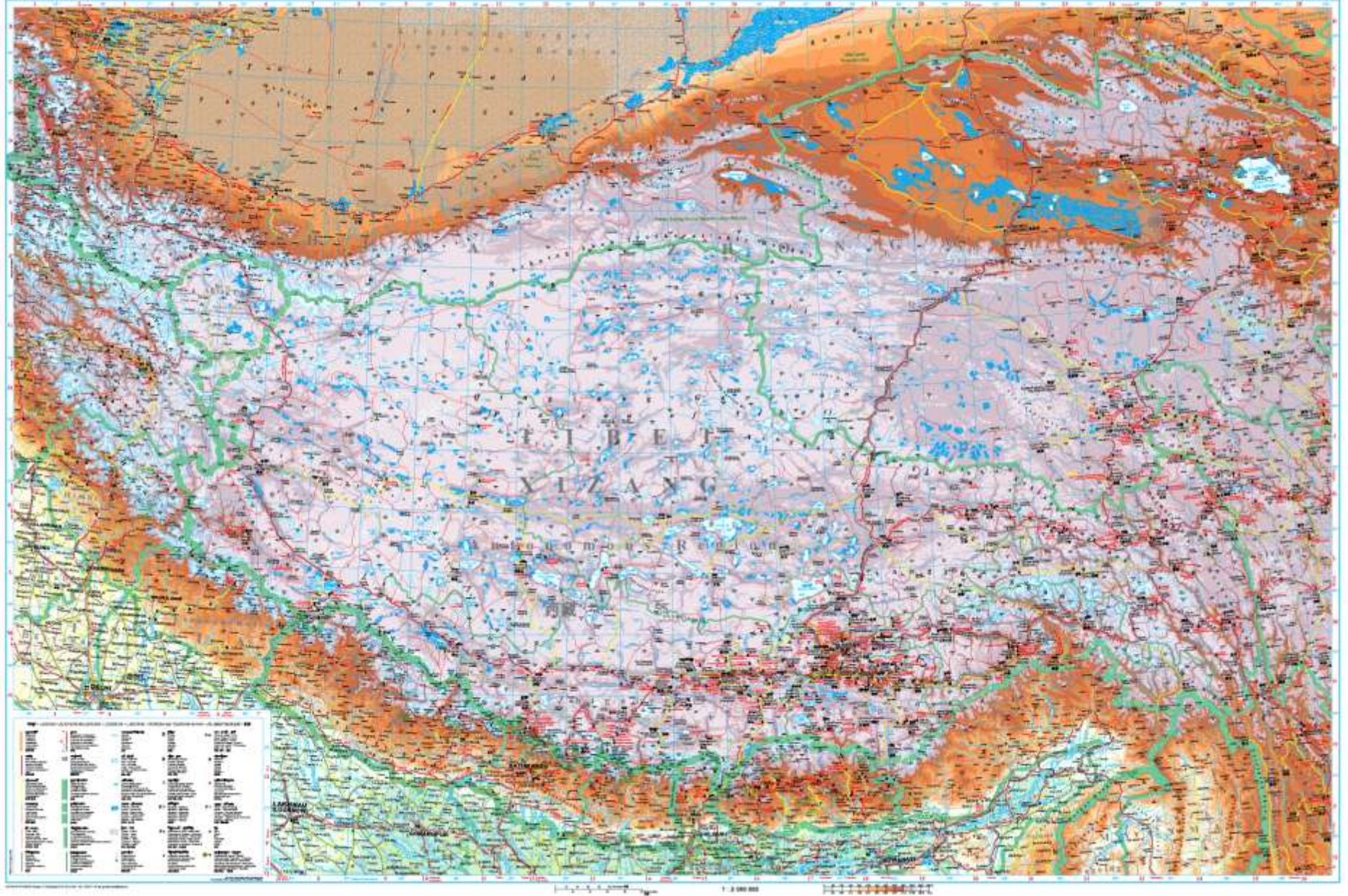
Geographical - The relief is with elevation tone  
Road Map - The relief is with hatching

# Maps published by GiziMap

# TIBET Geographical Map 1: 2 000 000

XIZANG • 西藏

TIBET • སུ་





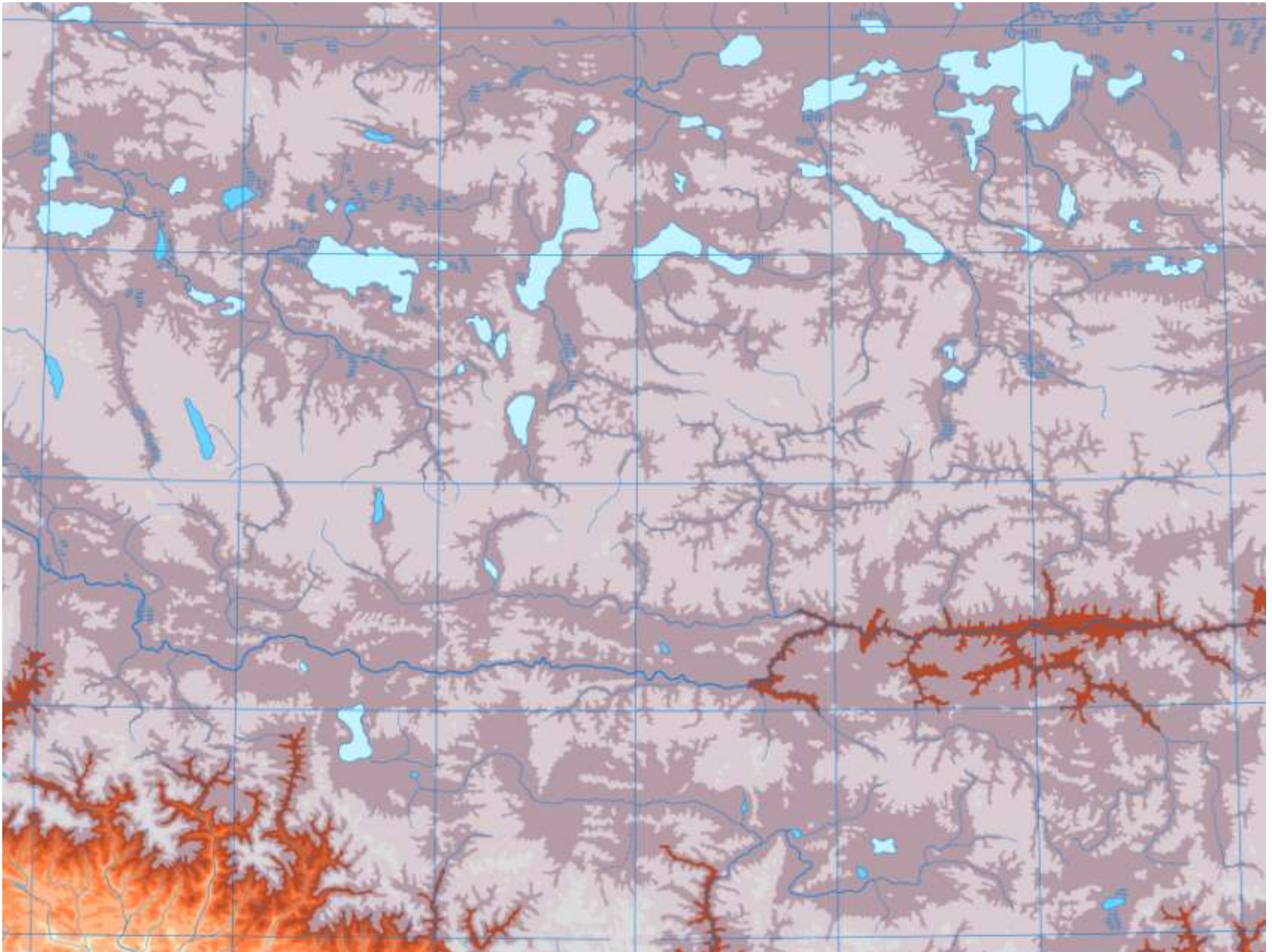
# H-45 Topographical Map 1: 1 000 000



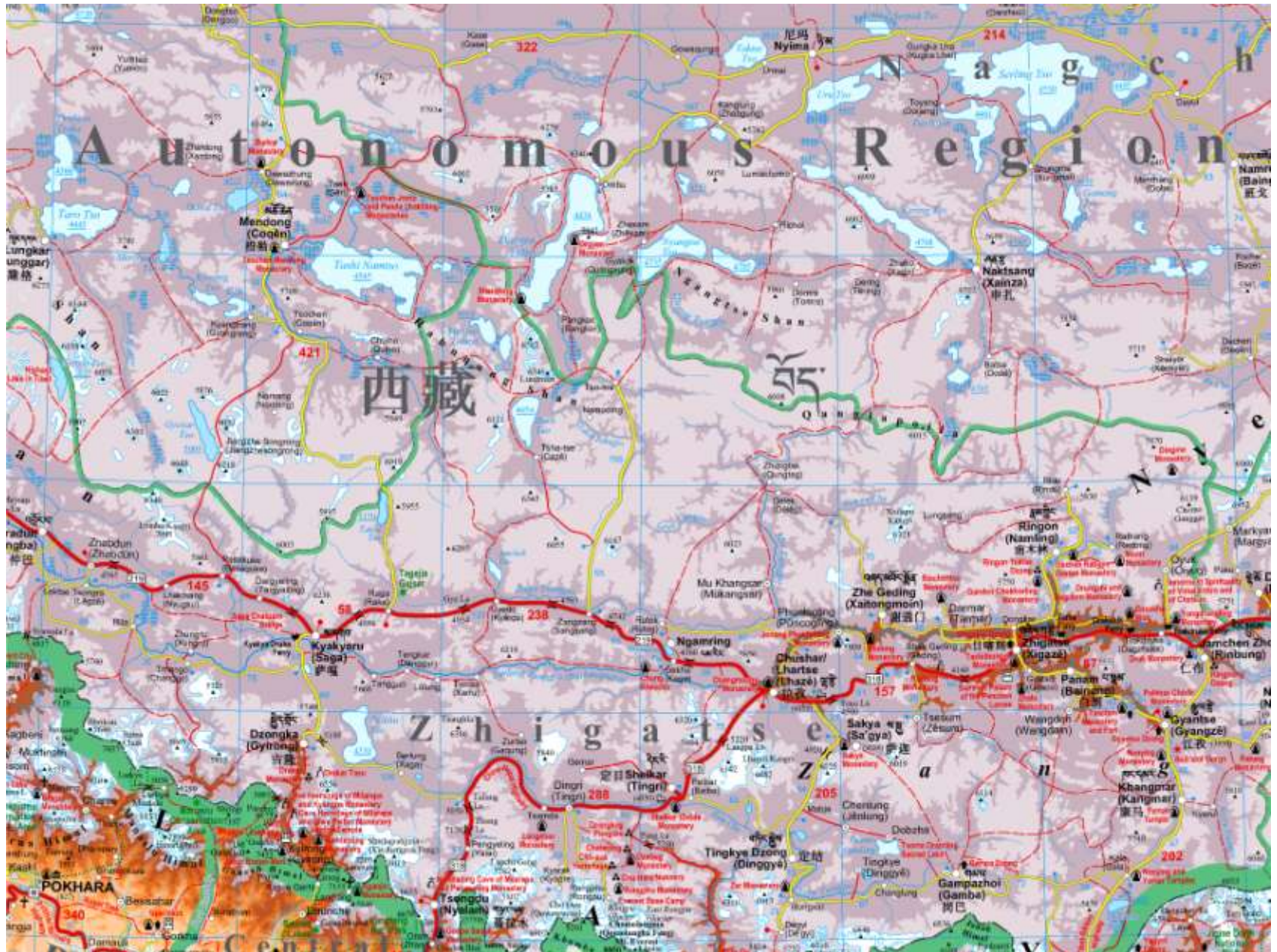
**Compilation original for relief 1:1 000 000 (hand-made)**



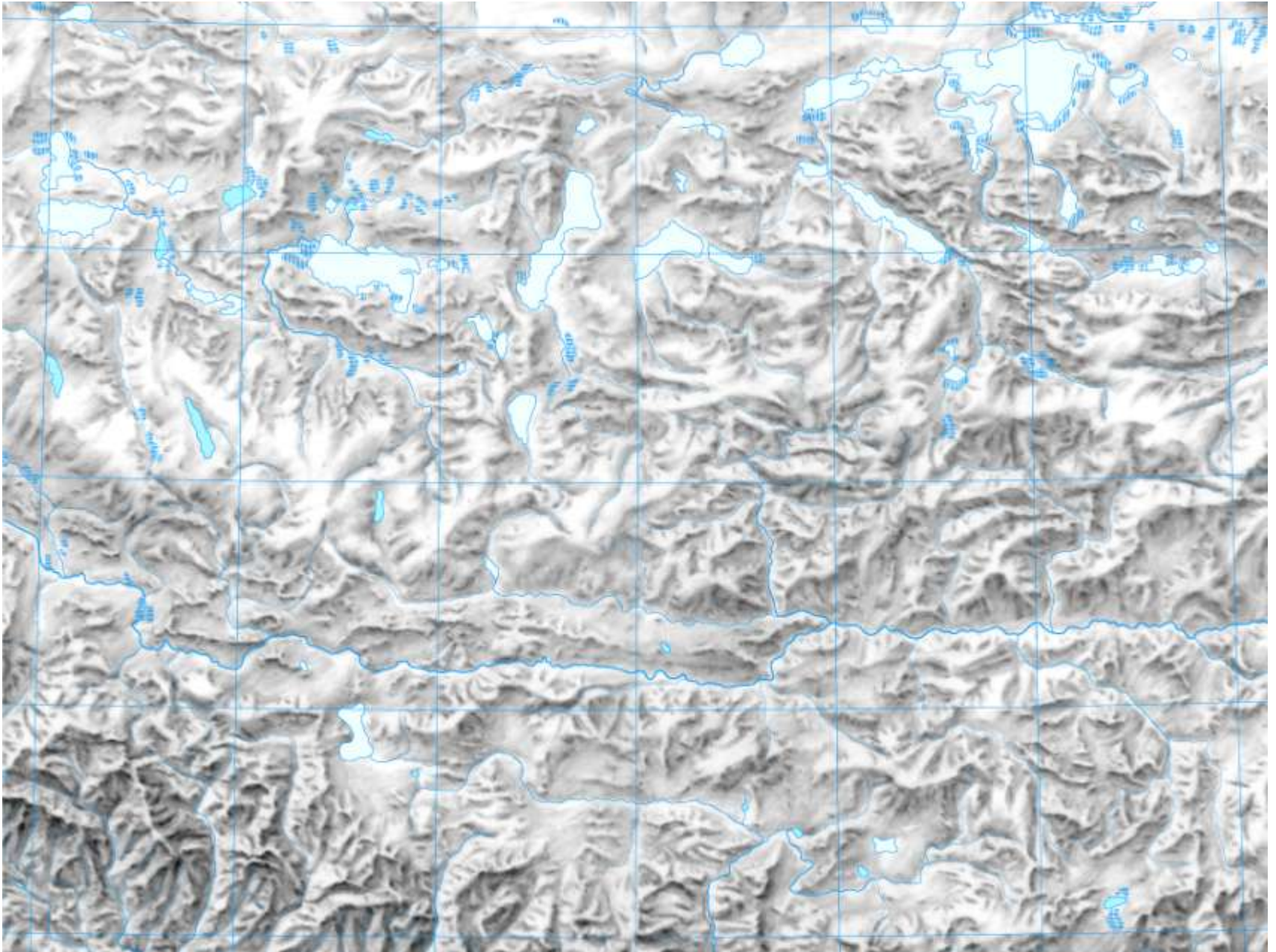
# Digitalized compilation original for relief 1:2 000 000



# Printed map with elevation tints



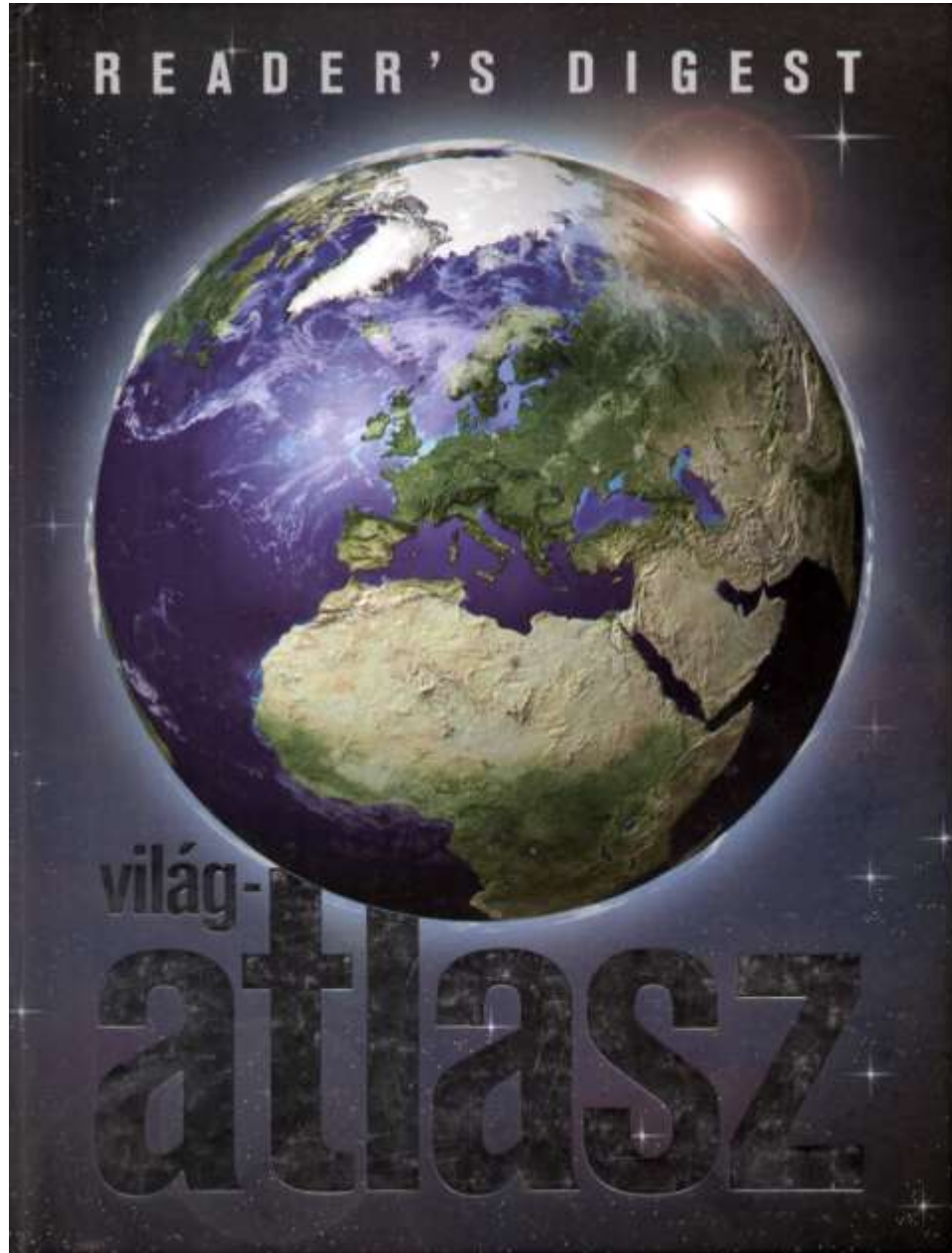
# Traditional hill-shading original (hand-made)



# Printed map with hill-shading

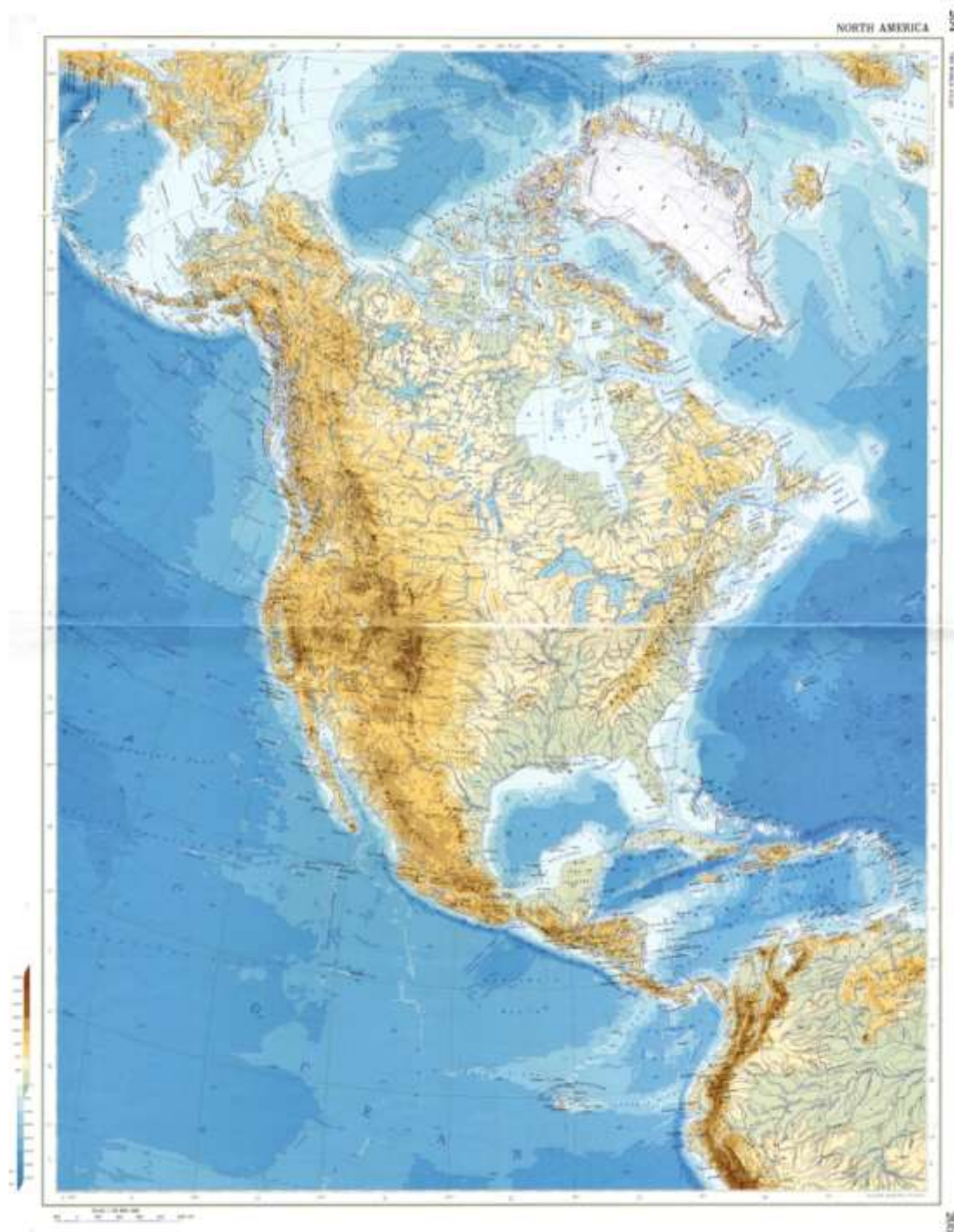


# World Atlas hill-shaded by GiziMap



**p. 244-245 USA, Mexico Scale 1:12 000 000 Hydrography**





**Atlas Mira**  
**p. 204-205**  
**North America**  
**Scale 1:20 000 000**

# Fitting together hydrography and base map



# Base map fitted to hydrography



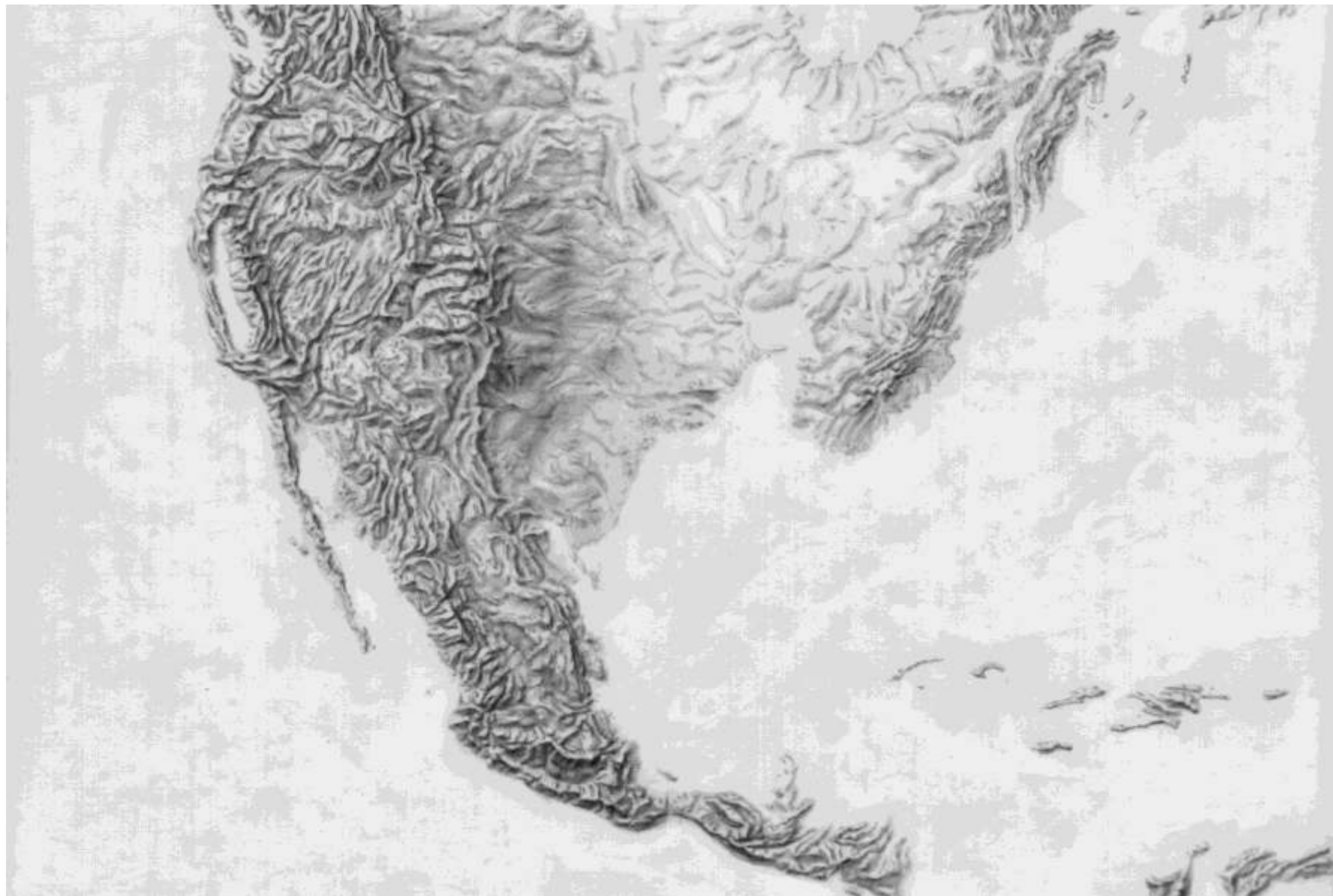


**Film for work  
on hill-shading**



**Colour print of base map  
for work  
on hill-shading**

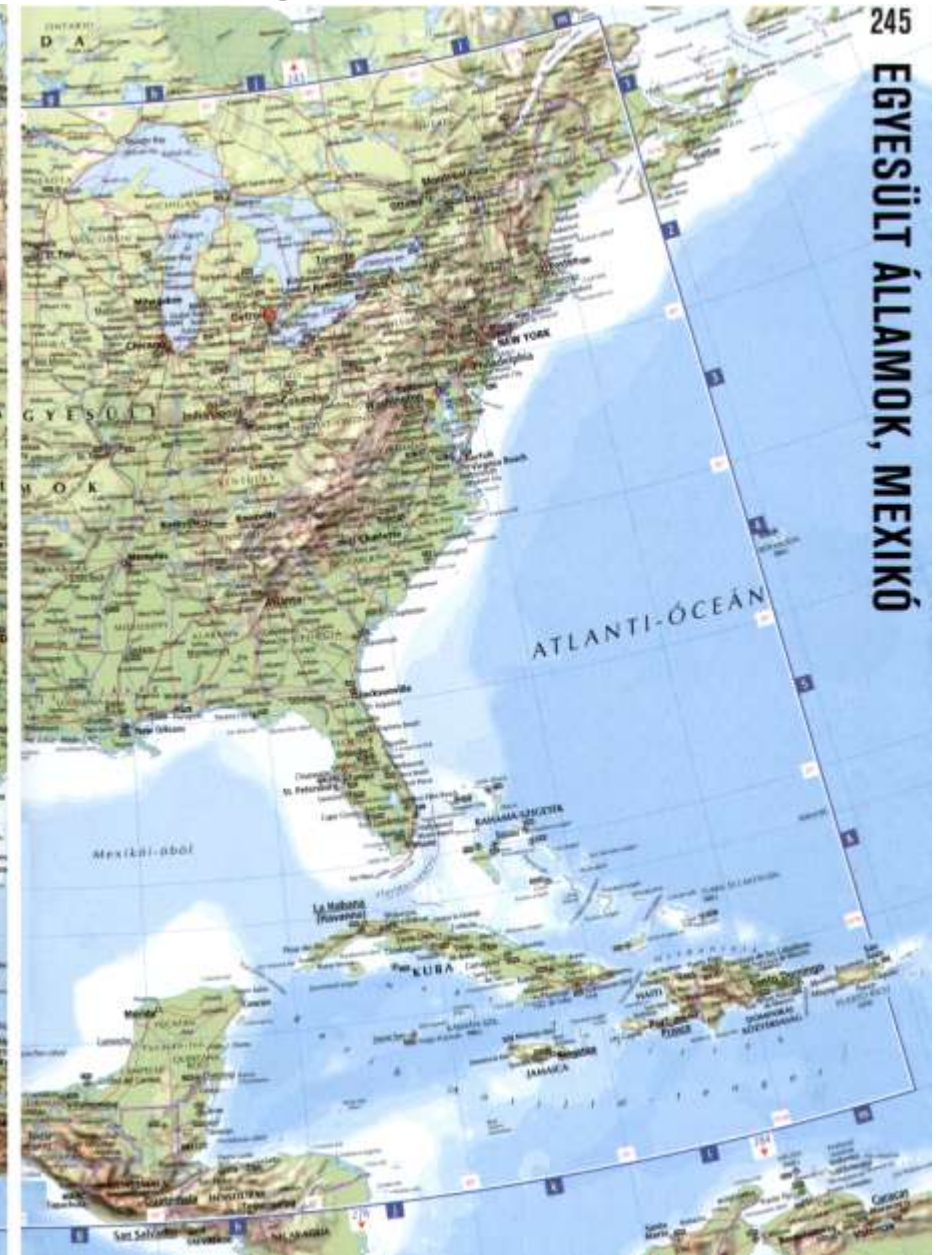
# Hill-shading original made by hand on the folex



# Scanned traditional hill-shading with hydrography



# Printed pages from Reader's Digest World Atlas



EGYESÜLT ÁLLAMOK, MEXIKÓ

# p. 196 Switzerland and North Italy

