



6th ICA Mountain Cartography Workshop
Mountain Mapping and Visualisation
11 – 15 February 2008, at KUSPO, Lenk, Switzerland

WEB APPLICATION FOR TOPOGRAPHIC MAPS CHANGES ACQUISITION

Dušan Petrovič¹, Blaž Kovačič²,

¹University of Ljubljana,
Faculty of Civil and Geodetic Engineering
Chair of Cartography, Photogrammetry and Remote Sensing;

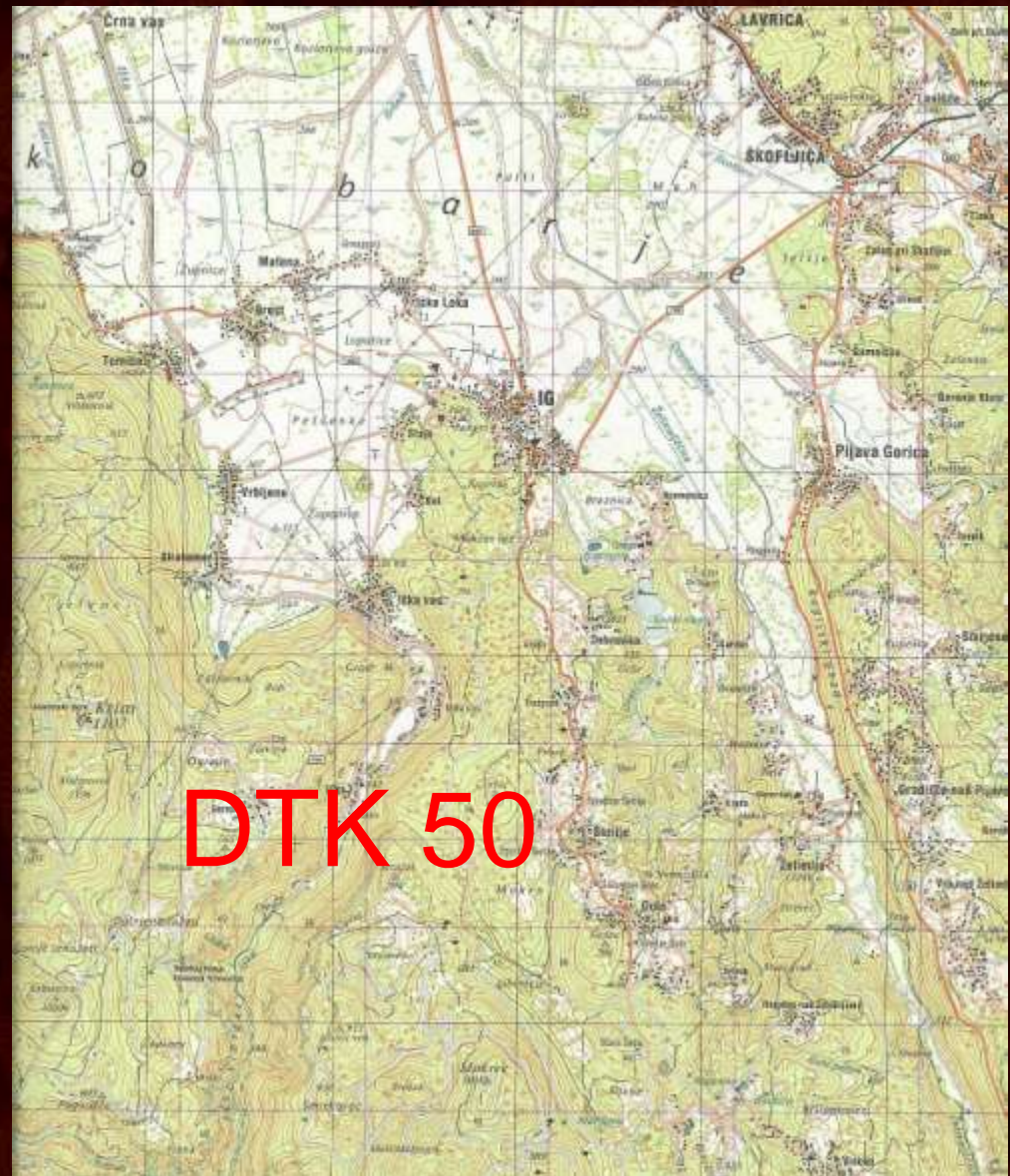
²Geodetic Institute of Slovenia;
Jamova 2, 1000 Ljubljana, Slovenia

E-mail: dusan.petrovic@fgg.uni-lj.si

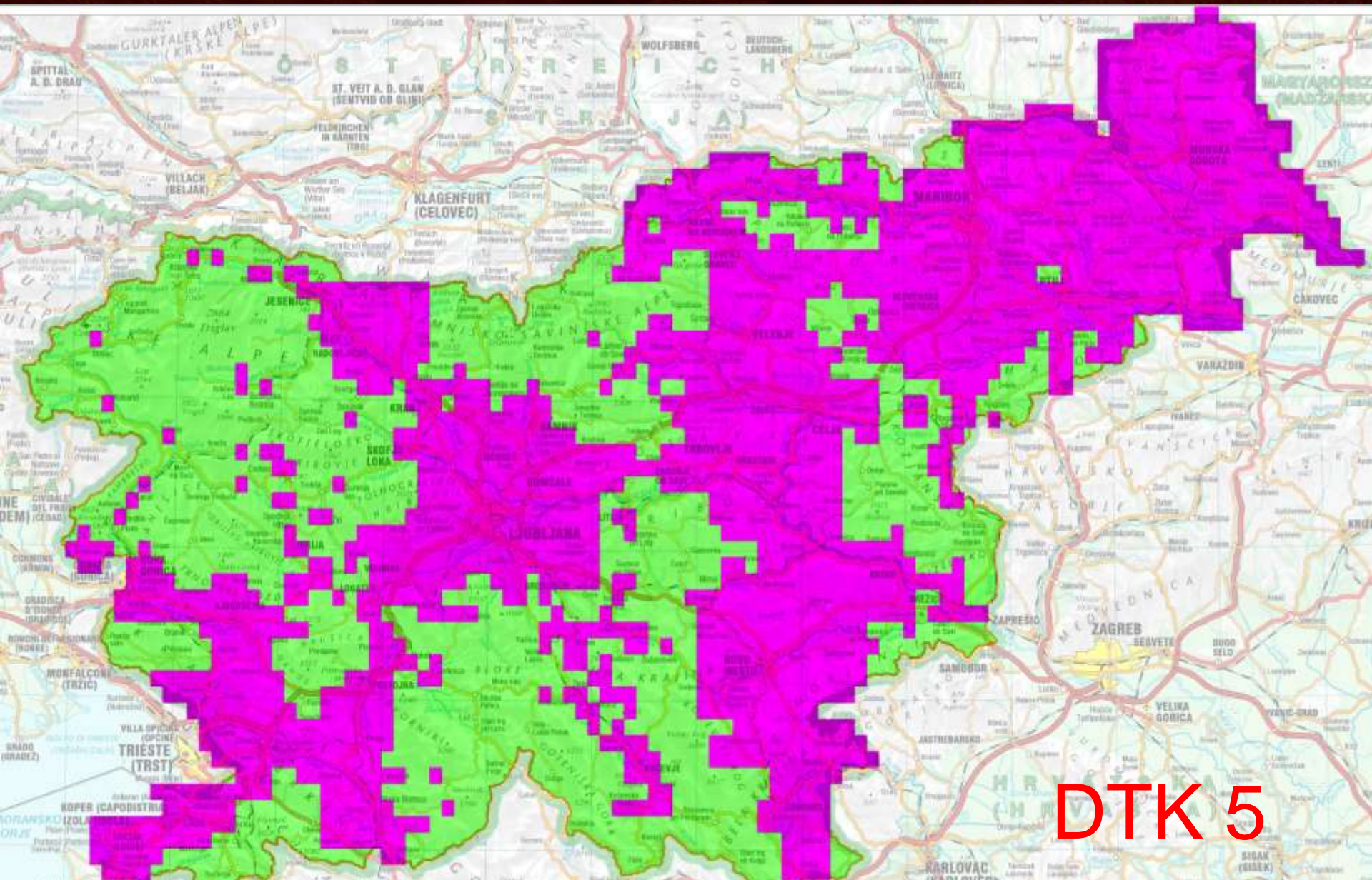
Motivation

- status (regular updating) of topographical data (maps / databases) in mountain areas
- modern technologies and methods for capturing only partly replace economically aggravating field work
- importance of not very distinctive, but important objects and phenomena (mountain tracks, single tracks in forests, passages in steep and rocky slopes, springs, small graveyards, memorial signs etc.)

Large scale topographic data in Slovenia

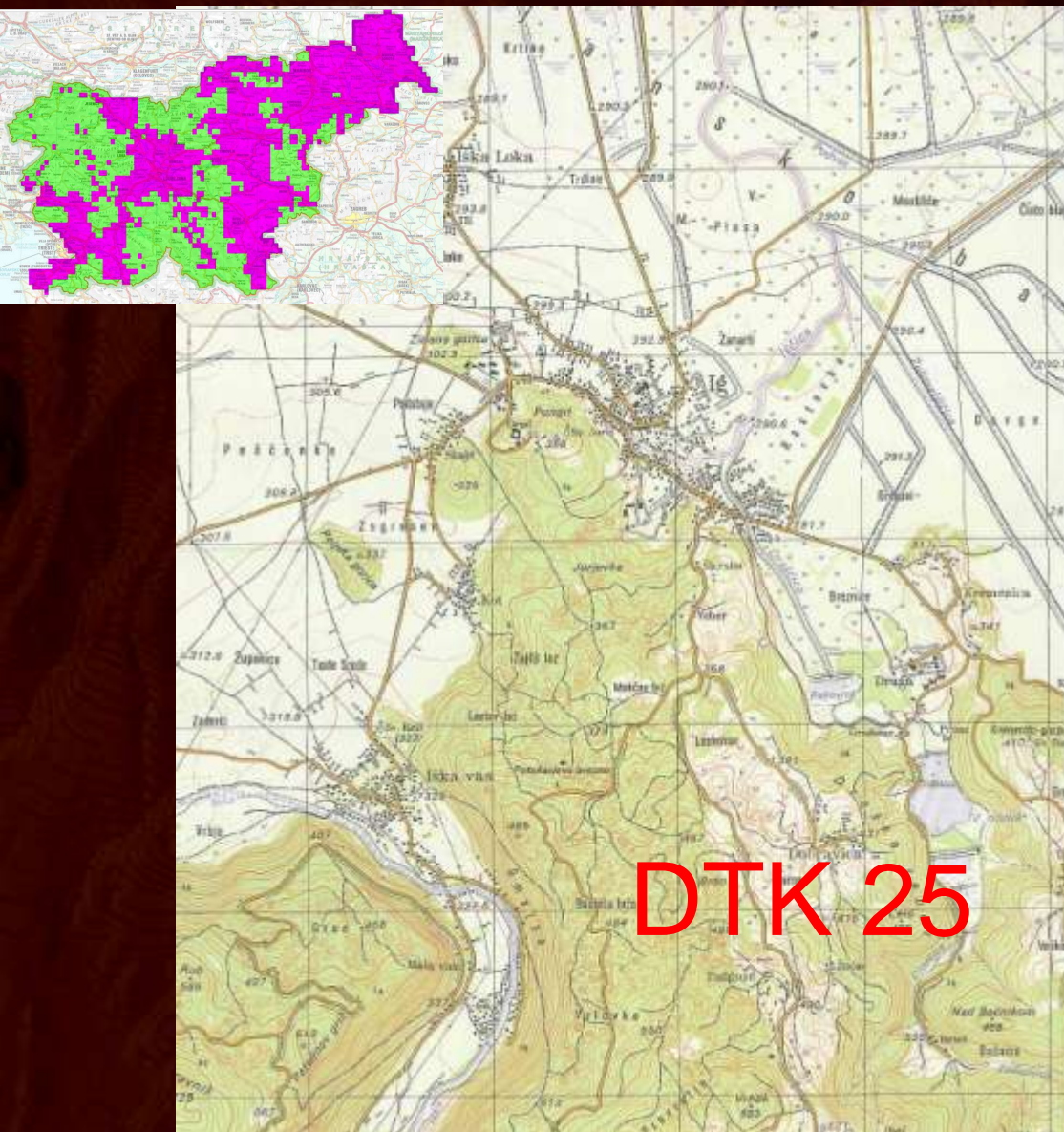


Large scale topographic data in Slovenia



DTK 5

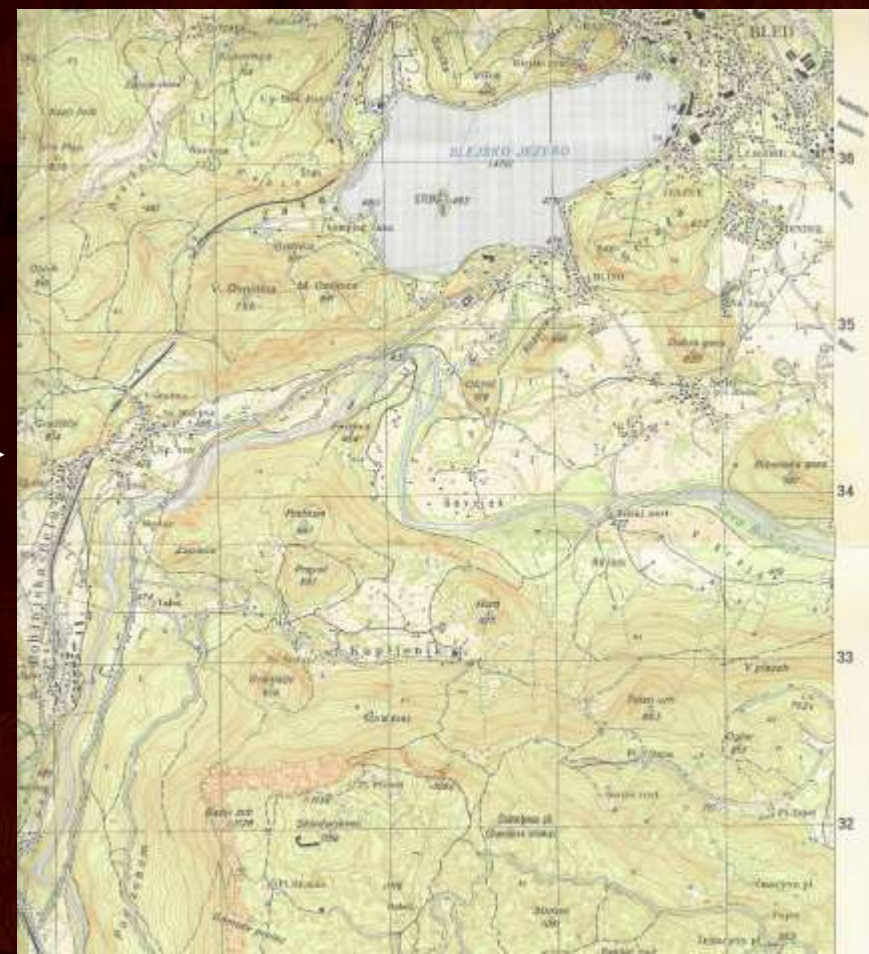
Large scale topographic data in Slovenia



Large scale topographic data in Slovenia

Yugoslav TK 25 (1985 – 86)

Slovenian DTK 25 (1994 – 98)*



Use of DTK 25

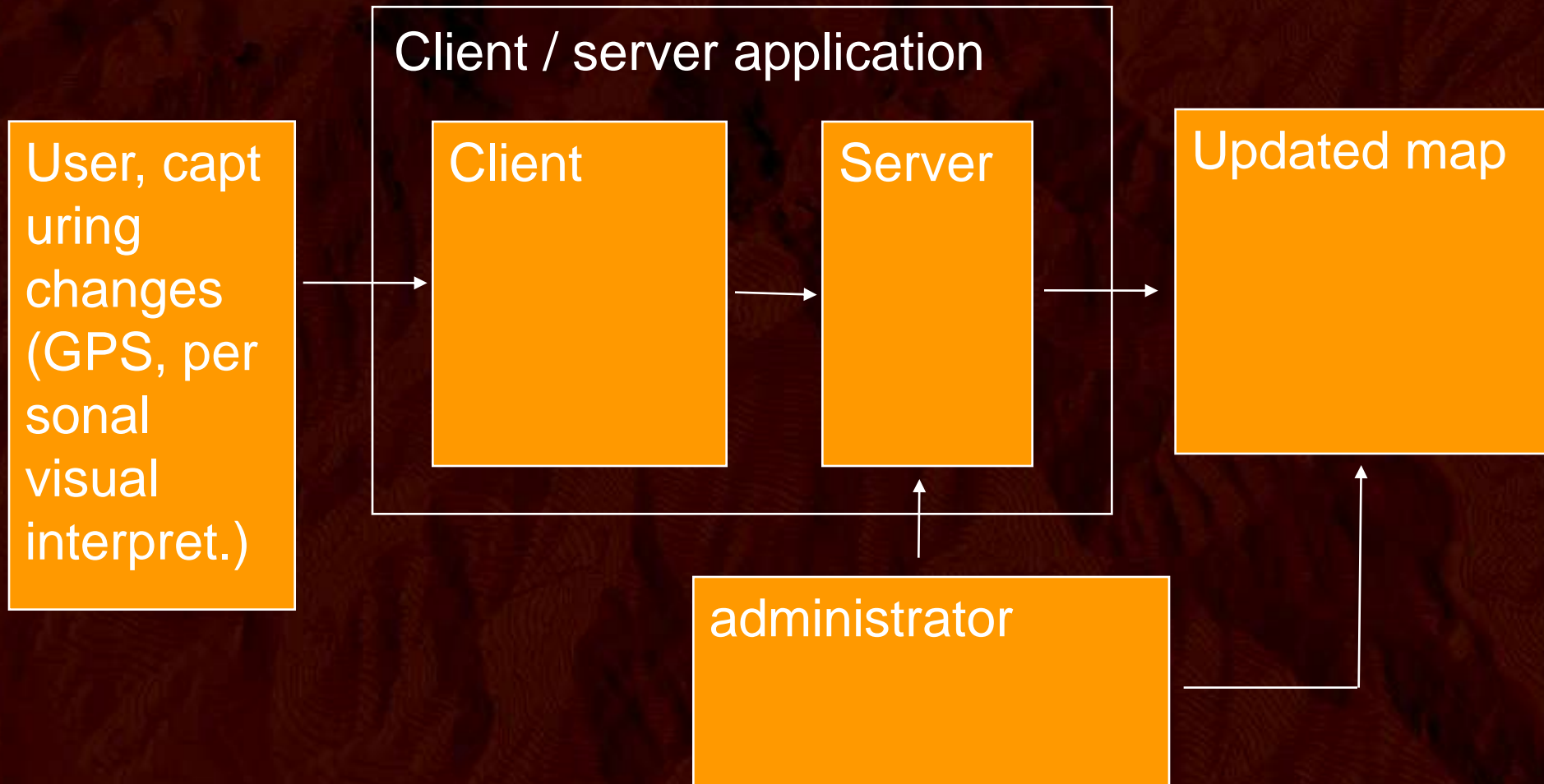


Paper maps

Raster and
vector
digital maps



Updating of official topographic data by users



users corrections to providers spatial data

 Tele Atlas® Map Insight™

Step 1 of 4: Adjust Map to the Problem Area

Note: The maps on this site may not be exactly the same as the maps provided on the device or website where the problem was seen.

Find A Place

House Number

Street Name

City

Domzale

State/Province

Postcode

1230

Country

Slovenia

Map Place

Place Find Results

1230, Domzale, Slovenija

1230, Domzale, Slovenija

Enter Latitude and Longitude
Use decimal degrees, e.g. -71.23

Latitude

Longitude

Map Location

Show Crosshairs

[Privacy Policy](#)

Issue Appears Fixed

[Next >](#)



© Copyright 2007, Tele Atlas. All Rights Reserved. Tele Atlas MapInsight 2007 07

Only reporting about the change in selected location
→ huge administrator's work

NAVTEQ Map Reporter My Reports Support language login

NAVTEQ Map Reporter™

1. Where is the location of your requested update?

Country


Switzerland

Freeform | Structured | Lat/Long

Street Address

Lenk

City



© 2008 NAVTEQ

INSTRUCTIONS: Use the address entry form above the map to locate your update. If the location of your requested update is displayed within the red circle, proceed with this form. If the red circle is not in the right location, move your cursor or use the map pan and zoom tools to find the correct spot, and then double-click to mark it with a red circle.

2. Type of feedback (see our [support page](#) if your Map Report appears correct in the map above [or our Map Update Store to upgrade your map](#))

Choose from list:

Address

address is missing

address appears in the wrong location

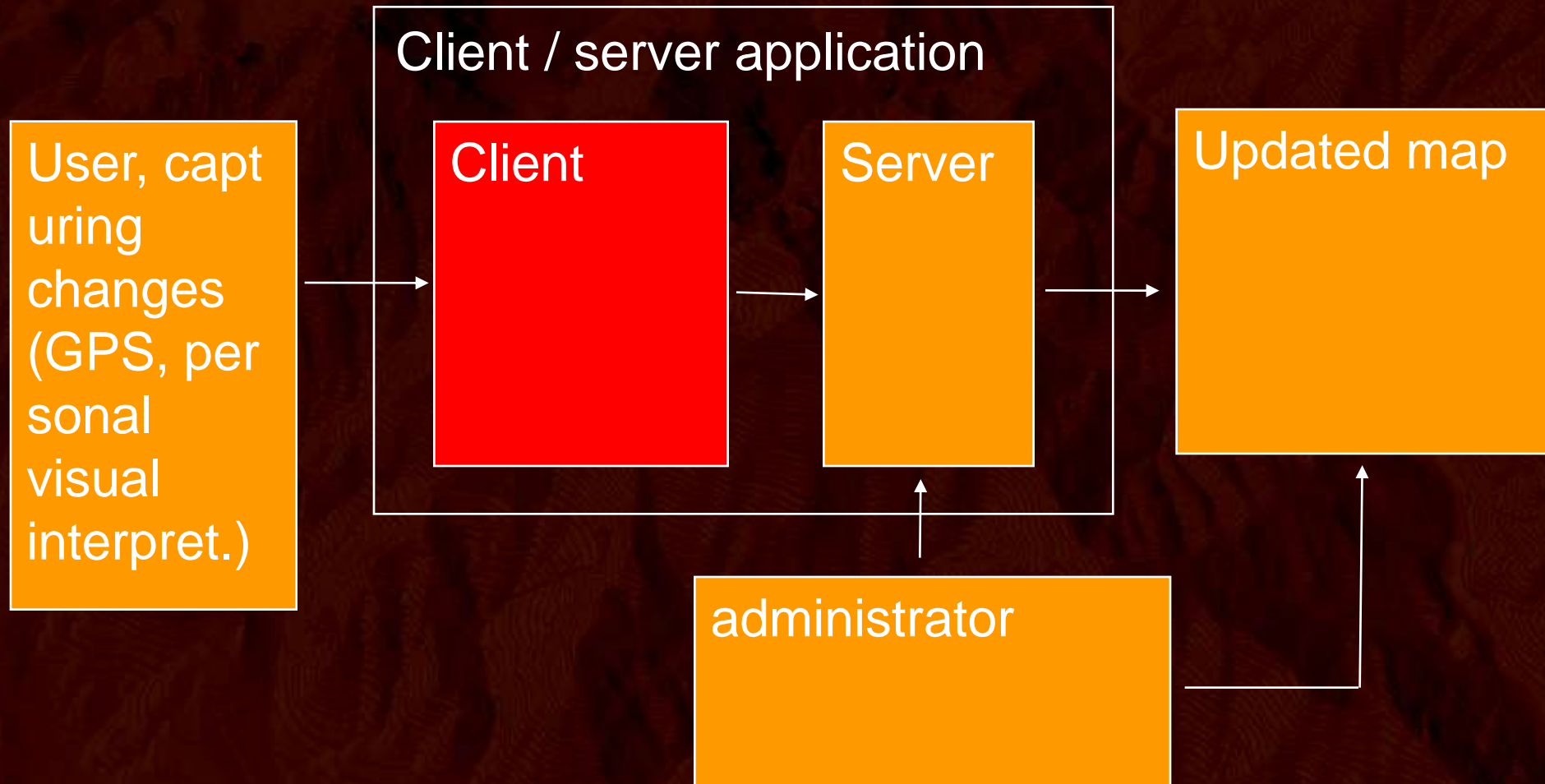
address should be removed

Point of Interest (POI) (bank, store, etc.)
Business Owners: [See our Direct Access program](#) to automatically keep your POIs up-to-date

POI is missing

POI has incorrect details

Updating of official topographic data by users



Application "Reambulator v1.0"

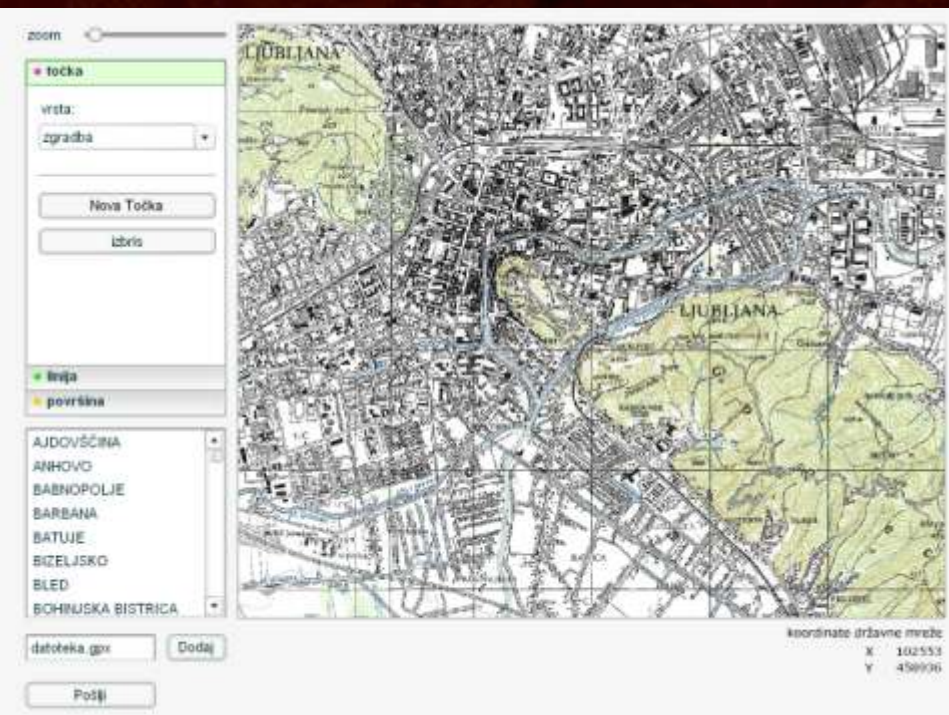
The screenshot displays the user interface of the "Reambulator v1.0" web application. The interface is divided into several sections:

- 2 zoom:** A slider control for adjusting the map's zoom level.
- 3 točka:** A section for adding points, featuring a dropdown menu for "vrsta" (type) currently set to "zgradba" (building), and buttons for "Nova Točka" (New Point) and "izbris" (delete).
- 4 linija / površina:** A section for adding lines and polygons, with a list of locations including AJDOVŠČINA, ANHOVO, BABNOPOLJE, BARBANA, BATUJE, BIZELJSKO, BLED, and BOHINJSKA BISTRICA.
- 5 datoteka.gpx / Dodaj:** A section for uploading GPX files, with a text input field and a "Dodaj" (Add) button.
- 6 koordinate državne mreže:** A section for displaying coordinates, showing X: 99582 and Y: 461808.

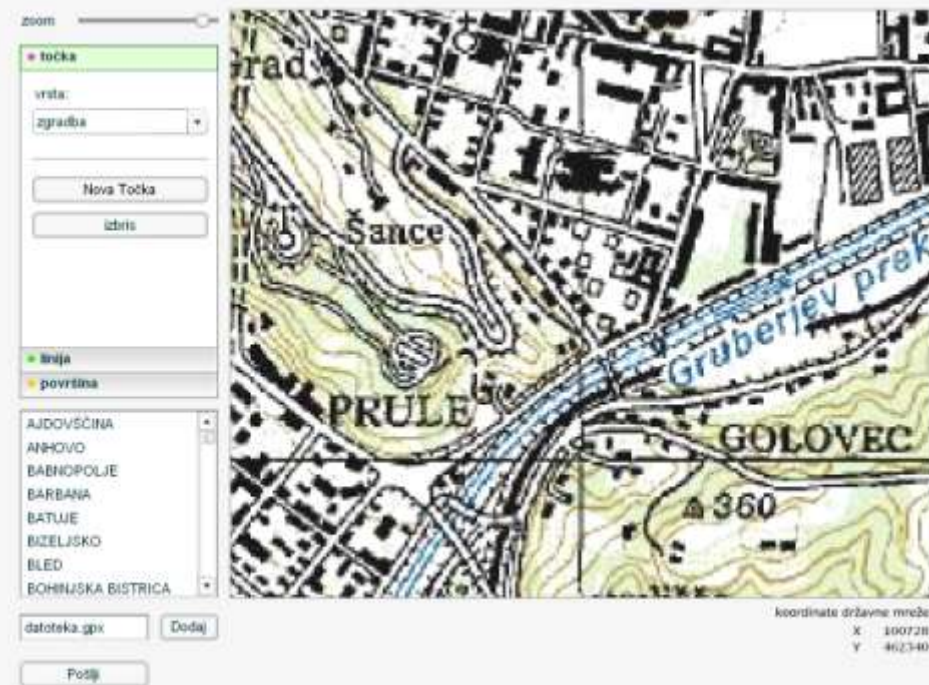
The central map shows a topographic view of Ljubljana, Slovenia, with labels for "LJUBLJANA (291.8)", "PRULE", "GOLOVEC", "RAKOVNIK (806)", and "TRNOVO". The map includes contour lines, roads, and buildings. Red numbers 1 through 7 are overlaid on the interface to highlight specific features.

User interface - client

Application "Reambulator v1.0"



zooming



Inserting point, line and area object

The image displays three screenshots of a web application interface for editing topographic maps. Each screenshot shows a map with a specific object being added and a corresponding control panel on the left.

Top Left Screenshot: Shows a map with a pink point being added near a river. The control panel on the left has "točka" selected. The map labels include "Bukov vrh 1437", "Praprotnica 1432", and "1316".

Top Right Screenshot: Shows a map with a green line being added around a peak. The control panel on the left has "linija" selected. The map labels include "Glashite", "1314", and "Gradiškogel 1389".

Bottom Screenshot: Shows a map with a yellow area being added near a river. The control panel on the left has "površina" selected. The map labels include "Portovald", "Na drski 225", "DRSKA", "KANDIJA", and "Rag NO".

Each control panel includes a "zoom" slider, a "vrsta:" dropdown menu, and buttons for "Nova točka", "Nova linija", "Nova površina", and "Izbris". The bottom panel also includes a "datoteka .gpx" field, a "Dodaj" button, and a "Potip" button.

Coordinate information is visible in the bottom right corner of the bottom screenshot: "koordinata državne mreže X 172615 Y 502413".

My Documents DAEMON Tools Mapa log.txt pog.zap.KO... Spybot - Searc...

My Computer eMule AutoCAD 2008 MagicISO Prenova3.doc stanovanje,...

My Network Places Nero Home avto.xlsx MapSource Prenova.doc OCAD 9

Recycle Bin Nero StartSmart Azureus Vuze mIRC prošnja.doc Internet Explorer

tekst.rtf Notepad++ baza.avi mwga.rar VundoFix.exe

ACDSee 9 Photo Manager O&O Defrag bilten št. 2.doc Turbo Squid Tentacles razpored 2 2007 08.doc

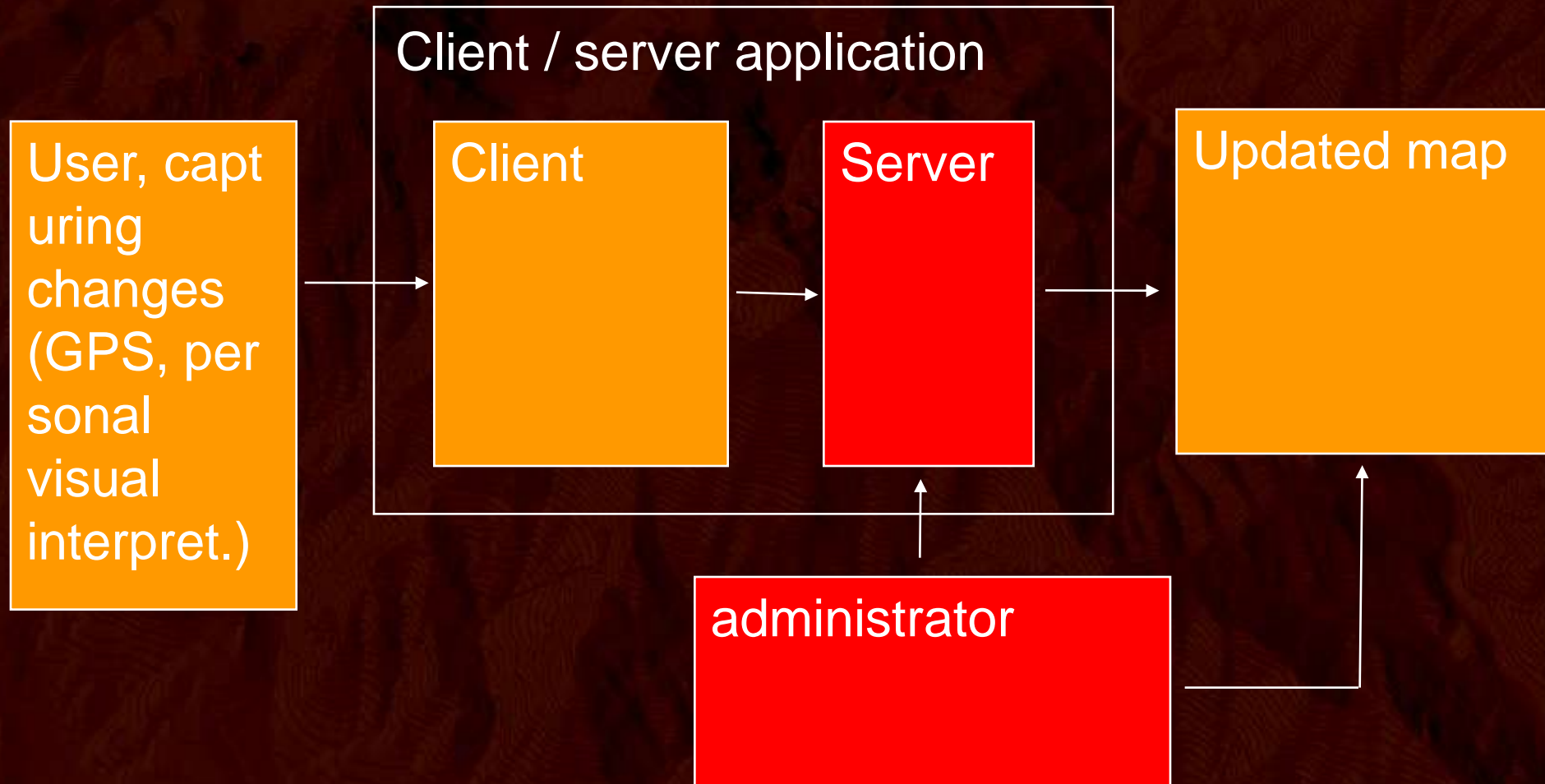
Adobe Acrobat 8 Professional QuickTime Player delete.sql ocad.avi reambulator,...

Autodesk 3ds Max 2008 ... RealPlayer edge.wmv ogu.zip Screen Movie Studio

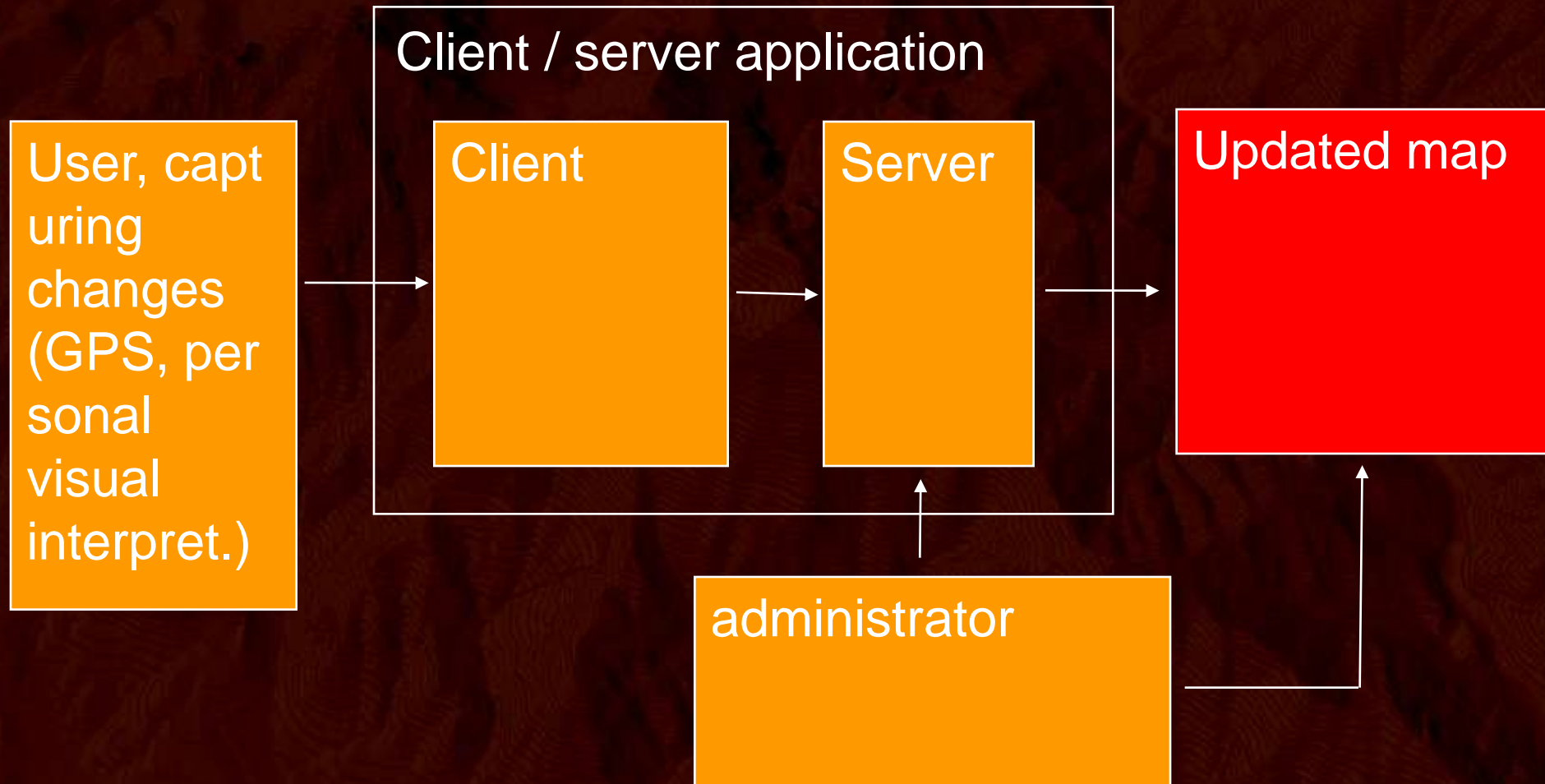
BSPlayer Pro Winamp Kovax-ure.xls paper_Petro... Skype



Updating of official topographic data by users



Updating of official topographic data by users



My Documents DAEMON Tools Mapa

My Computer eMule AutoCAD 2008

My Network Places Nero Home MapSource

Recycle Bin Nero StartSmart Azureus Vuze

tekst.rtf Notepad++ OCAD 9

ACDSee 9 Photo Manager O&O Defrag Internet Explorer

Adobe Acrobat 8 Professional QuickTime Player

Autodesk 3ds Max 2008 ... RealPlayer

BSplayer Pro Winamp

log.txt paper_Petro... Skype

delete.sql pog.zap.KO... Spybot - Search...

MagicISO Prenova3.doc stanovanje....

edge.wmv Prenova.doc baza.avi

mIRC prošnja.doc Kovax-ure.xls

mwga.rar VundoFix.exe bilten št. 2.doc

Turbo Squid Tentacles razpored 2 2007 08.doc reambulator...

ocad.avi reambulator.... RagovLog.gpx

ogu.zip Screen Movie Studio avto.xlsx

Conclusions

Reambulator v1.0 was tested only in “lab” environment until now

Some corrections in interface, server data structure

Test period of use for all users

Cooperation with National Mapping Authority